

# USB Speaker Phone

## User Manual



For Skype

## 1 Instruction

### 1.1 Summary

Plugging into your computer's USB port, you can make and receive Skype calls. It's Commercial speakerphone in high grade of quality having large LCD with backlight. Phone rings for all incoming calls. You can dial Skype numbers on the phone.

### 1.2 Features

1. Commercial speakerphone in high grade of quality, ideal for conference calls
2. Large LCD with backlight
3. Phone rings for incoming calls, ring style and volume selectable
4. Dial Skype contacts and skypeout number by phone keypads
5. Caller ID function of Skype incoming calls
6. Echo cancellation, noise reduction, full duplex communication

### 1.3 System Requirements

1. Windows 2000 or XP
2. 400MHz processor and free USB1.1 or USB2.0 port
3. 128MB RAM and 15MB free disk space
4. Any broadband connection or minimum 33.6 Kbps dialup

### 1.4 Package Contents

1. one USB Speaker Phone
2. one User Manual
3. one USB Cable
4. one Installation CD

## 2 Using the USB Speaker Phone

### 2.1 Keypad Instruction



#### IN/OUT

Press to scroll the caller or dialed number.

#### ▲/▼: Up/Down

Scroll to the contacts.

#### DEL

(1) Press to scroll the Skype tab at ready state.

(2) Delete the input wrong number while dialing.

**VOL+/VOL-**: Adjust speaker volume.

**FLASH**: Quit all operation of the phone, and make it standby.

**SEND**: Call out the number shown on LCD screen/Hold the call

**HELP**: Press to open the help web page.

: Handfree key

\* +: Press to input “+” at ready state, else input “\*”.

# 0: Press to select ring style at ready state, else input “#”.

### 2.2 Run Skype

(1) Download Skype software and install it ([www.skype-phone.net](http://www.skype-phone.net)).


(2) Run Skype and log in with Skype account.

You can create a Skype account as shown below:



After software's startup, the icon will appear to the system tray as shown below:




That indicates the Skype are successfully connected to Internet. If the icon is shown as , you have to check your Internet connection.

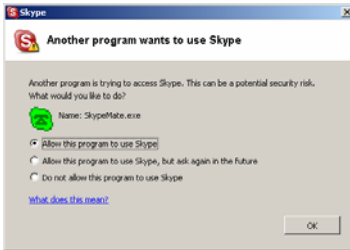
## 2.3 Connect USB Speaker Phone to PC

When USB Speaker Phone is connected to PC, the LCD shows "VOIP-PHONE".

## 2.4 Run SkypeMate

- (1) Insert SkypeMate installation CD or download SkypeMate software, then install it.
- (2) Run SkypeMate

Double-click the icon  on the desktop, the Skype program will pop up the window as shown below:




Select the first option "Allow this program to use Skype", click "OK" button.


**Note:** If you selected the wrong option, you can make another selection. Please see **2.9. FAQ /problem4** for detail.

After running SkypeMate, the icon will appear to the system tray as shown:



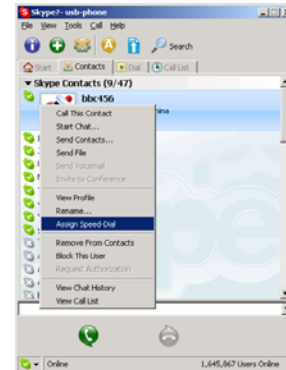
That indicates the device and Skype are connected successfully.

If the icon shown as  (the phone is green and the outside is grey), please run Skype first.

If the icon shown as  (the phone is red and the outside is green), it means USB Speaker Phone is connected incorrectly. Please reconnect USB Speaker Phone to PC.

## 2.5 Call another Skype user

- (1) Add "bbc346" to Contacts
- (2) Assign Speed-Dial for it, example "11"



(3) Input number and call out:

Press digital "11" on USB Speaker Phone, this number will be shown on Skype window, then press SEND key to call out.

## 2.6 Call to normal phone

Press "00"+"country number" + "phone number", then press SEND key to call out.

Example: Call to China, Beijing, press 00861012345678, then press SEND key.

0086                      10                      12345678

-----                      -----                      -----  
country code                      city code                      destination number

### **Note:**

(1) You can input "+"(press "\*+" key) instead of "00".


For example: Call to China, Beijing, press +861012345678.

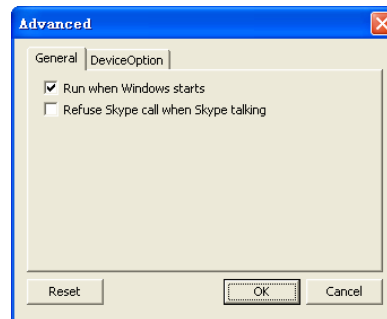
(2) If you want to use this function, you should buy SkypeOut Credit from [www.skype.com](http://www.skype.com) first.

## 2.7 Answer a call

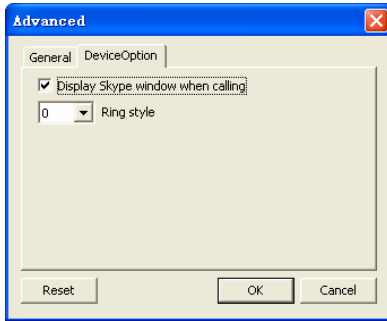
When USB Speaker Phone is ringing for an incoming call, pick up handset or press handfree key to answer the call.

## 2.8 Advanced

- (1) Right click the icon  on the taskbar and select **Advance**
- (2) The window is shown as below:



- (3) **Run when Windows starts:** Select to enable this feature. The SkypeMate will be launched automatically when Windows starts.
- (4) **Refuse Skype call when Skype talking:** Select to enable this feature. The second incoming Skype call will be refused when talking.



- (5) **Display Skype window when calling:** If you cancel this option, when you press the digital keys 0-9, \*, #, the Skype windows will not pop up (except incoming call and outgoing call).
- (6) **Ring style:** They are 10 types of incoming ring (0-9). You can press “#” on USB Speaker Phone to select it when the phone is at ready state. You can select it in “Advanced” windows too.
- (7) Click the button “**OK**” to save the setup.

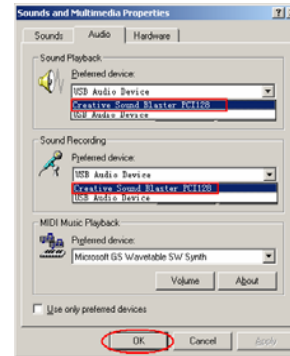
## 2.9 FAQ

### Problem 1

I am not able to hear any sound through the earphone?

#### **Solution**

Go to “Control Panel” -> “Sound and Video” (🔊) -> “Audio” on your computer. The preference device of “**Sound Playback** and **Sound Recording**” should be your PC’s sound card, as shown below:



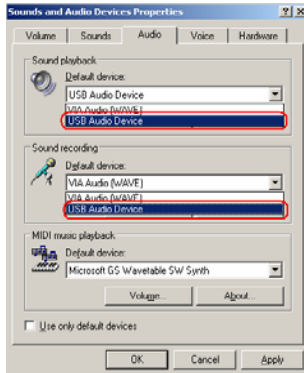
### Problem 2

I can’t play music through my USB Speaker Phone?

#### **Solution**

Go to “Control Panel” -> “Sound and Video” (🔊) -> “Audio”

on your computer. The preference device of “**Sound Playback** and **Sound Recording**” should be “USB Audio Device”, as shown below:

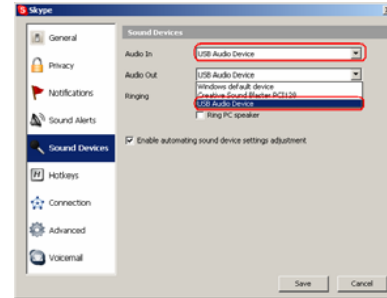


### **Problem 3**

The voice is heard from the computer’s sound card instead of the USB Speaker Phone when I make or answer a call?


### **Solution**

Go to “Tools->Options->Sound Devices” on your Skype page and open the window as shown below:



Set “Audio In” and “Audio Out” to “USB Audio Device”.

### **Problem 4**

Skype is running, but the icon of SkypeMate still show as (the phone is green and the outside is grey)? 

### **Solution**

You have selected the wrong option when you installed SkypeMate (the phone’s driver). Go to “Tools -> Options -> Privacy -> “Manage other programs’ access to Skype”. Select the correct option, click on the “Change” button to open the “Manage API Access Control” windows, and make another selection.